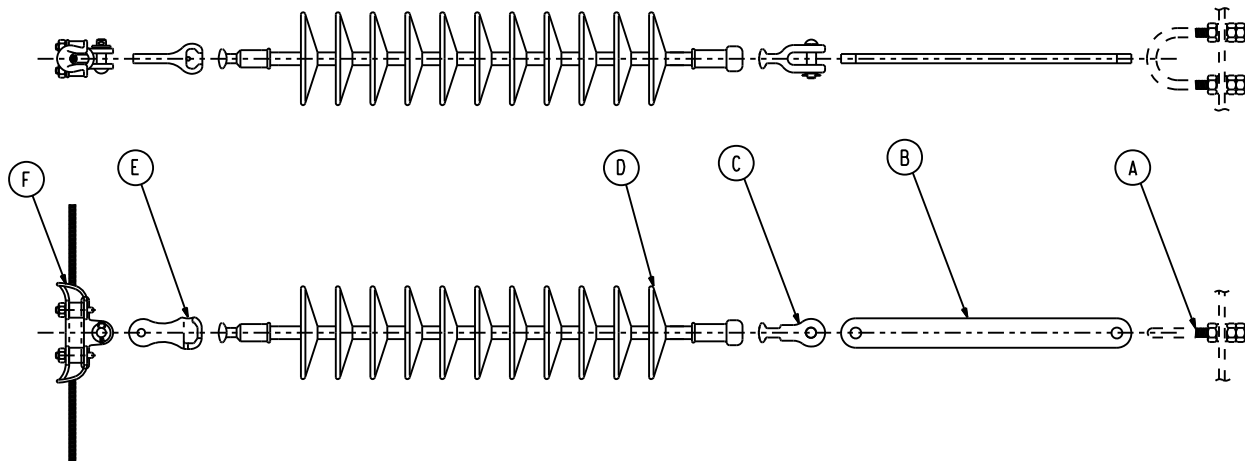


No.	D-DT-	DESCRIPTION	SAP NO.	QTY
A	6098	BOLT U GALV M16 x 89 x 102mm	0163763	1
B	6110	STRAP EXT ST 450mm CRS 50mm WD	0402467	1
C	6059	CLEVIS-BALL 16mm IEC 120kN	0167508	1
D	7029	INSUL,L/ROD 66kV 120kN C/L=±880 31C	0167609	1
E	6061	SOCKET-TONGUE 16mm 120kN	0010270	1
F	7009	CLAMP, SUSP PIVOTED 25.0-40.0	0402629	1



3	REFERENCE TABLE CORRECTED	P.A.T.	D.VISSER	T.MARAIS	27.01.2017	
2	D-DT- REFERENCE NO's CORRECTED. SAP NO's ADDED.	VvZ	J.F.S.	C.B. CLARK	2004/05/25	
1	DRAWING NO. CHANGED FROM D-DT-4781 TO D-DT-4783	VvZ	C.B.C	A.BEKKER	2002/08/05	
REV	REVISION DESCRIPTION	BY	CHKD	AUTH	DATE	PROJECT NO.



AUTH: B. MEYER
DATE: 2001/08/14
CHKD: M.A. SULAIMAN
DATE: 2001/08/14
DRAWN: D.J. LAUBSCHER
DATE: 2001/08/13

SUSPENSION STRING ASSEMBLY
66kV
1 X BULL CONDUCTOR

D-DT-4783

SET	SHEET	REVISION
	5	3

SCALE: N.T.S.